



# Certificate of Analysis

UElandy Inc.

Room 302, Building 1, No.18& Chunyao Road,

Xiangcheng District, Suzhou,

Jiangsu Province P.R, 215143 China

www.uelandy.com

Refer to website for regional contact information.

|                 |                     |                  |            |
|-----------------|---------------------|------------------|------------|
| Product Name:   | UE PCR Clean-up Kit | Lot ID:          | 231207KB1  |
| Catalog Number: | UE-PCR-250          | Expiration Date: | 06/15/2025 |

## Quality Control

### Electrophoretic Analysis

- Comparison of the Test Sample to a previously tested Standard. Acceptable range for Test Sample is  $\leq \pm 10\%$  of Standard, based upon analysis. The “Standard” is a previously tested and validated sample.
- The recovery of DNA from agar gel is more than 70%.

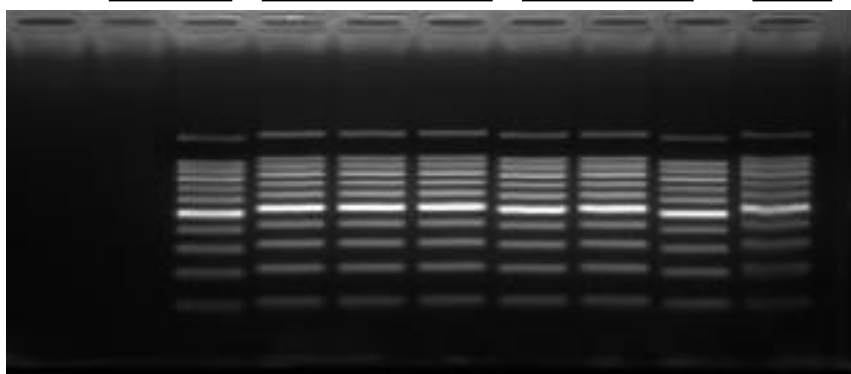
### Recovery Analysis

- The recovery of DNA from agar gel is more than 70%. Loading 8  $\mu$ l extracted PCR product mixture to the 2% agar gel for electrophoresis, and also loading 5.6  $\mu$ l and 8  $\mu$ l 100bp Ladder for 70% and 100% as contrast to estimate the recovery of purified PCR product by visual examination.

### Gel Image and Test Data

| Item                                       | Test Date |     |     |     |     |     | Sample  |
|--|-----------|-----|-----|-----|-----|-----|---|
|  | 1         | 2   | 3   | 4   | 5   | 6   |   |
| Yield (%)                                  | 100       | 100 | 100 | 100 | 100 | 100 | 1,2,3 are Test Samples<br>4,5,6 are Standards |
| [Test Sample/Standard]<br>Yield Difference | 0%        |     |     |     |     |     | PASS  |

100%M   STANDARD   TEST   70%M



UElandy Inc. warrants and represents that all inspections and testing for the article described above

have been performed at UElandy Inc. QC laboratory located on-site at the manufacturing plant. UElandy Inc. manufacturing facility is located at Room 302, Building 1, No.18& Chunyao Road, Xiangcheng District, Suzhou, Jiangsu Province P.R, 215143 China

(QC Inspector) 

(Approver) 