

## UElandy Inc.

Xiangcheng District, Suzhou,

Jiangsu Province P.R, 215143 China

www.uelandy.com

Refer to website for regional contact information.

Product Name:	UE Endo-free Plasmid	Lot ID:	231010KA2
	Miniprep Kit-Fast		
Catalog Number:	UE-MN-FEP-50	Expiration Date:	04/09/2025

## Quality Control

## Spectrophotometric Analysis

- Acceptable Range for A260/A280=1.8±0.15.
- Comparison of the Test Sample to a previously tested Standard. Acceptable range for Test Sample is ≤ ±10% of Standard, based upon spectrophotometric analysis. The “Standard” is a previously tested and validated sample.

## Restriction Analysis

- 1  $\mu$ g of plasmid is digested to completion by EcoRI

## Electrophoretic Analysis

- Agarose gel electrophoresis of the samples exhibits a defined plasmid band with no degradation.
- Agarose gel electrophoresis of the samples exhibits no contaminating RNA.
- Agarose gel electrophoresis of the samples exhibits no contaminating bacterial genomic DNA.

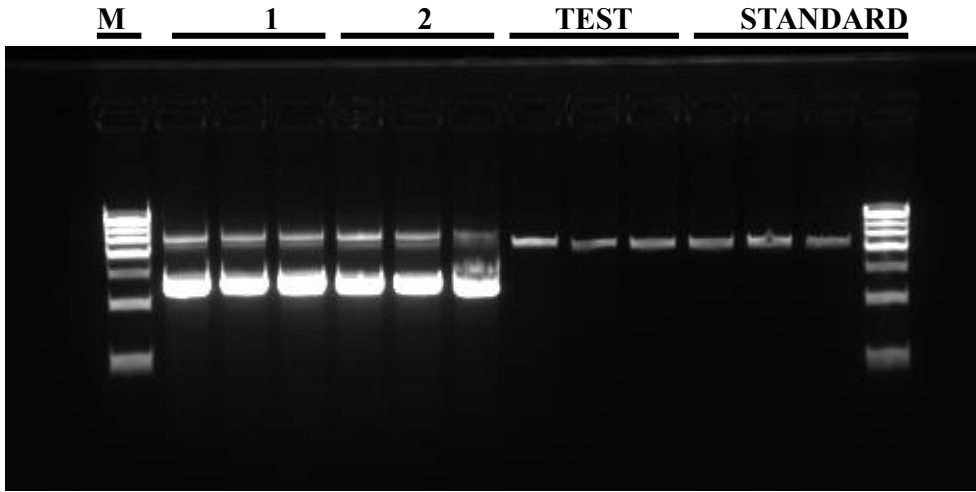
## Endotoxin Level Analysis

- Endotoxin level of Test Sample is  $\leq 0.1\text{EU}/\mu\text{g}$

## Gel Image and Test Data

Item	Test Date						Sample
	1	2	3	4	5	6	
A260	0.6050	0.5044	0.5901	0.5321	0.5430	0.5477	1,2,3 are duplicate Test Samples 4,5,6 are duplicate Standards
A280	0.3282	0.2874	0.3202	0.3078	0.2797	0.2983	
A260/A280	1.8433	1.7551	1.8428	1.7287	1.9413	1.8362	
Yield (µg)	22.688	18.913	22.127	19.952	20.363	20.541	
Electrophoresis	✓	✓	✓	✓	✓	✓	PASS
No visible RNA	✓	✓	✓	✓	✓	✓	
Endonuclease digest	✓	✓	✓	✓	✓	✓	

[Test Sample/Standard] Yield Difference	-4.51%						PASS
Endotoxin Level(EU/μg)	0.048	0.051	0.048	0.050	0.048	0.045	PASS



※1 and 2 respectively represent the test and standard enzyme digestion

UElandy Inc. warrants and represents that all inspections and testing for the article described above have been performed at UElandy Inc. QC laboratory located on-site at the manufacturing plant. UElandy Inc. manufacturing facility is located at Room 302, Building 1, No.18& Chunyao Road, Xiangcheng District, Suzhou, Jiangsu Province P.R, 215143 China

(QC Inspector) *Cen ming Jiang*

(Approver) *Qin Hua-Yu*