



Certificate of Analysis

UElandy Inc.

Room 302, Building 1, No.18& Chunyao Road,

Xiangcheng District, Suzhou,

Jiangsu Province P.R, 215143 China

www.uelandy.com

Refer to website for regional contact information.

Product Name:	UE Bacterial Genomic DNA Miniprep Kit	Lot ID:	230421KC4
Catalog Number:	UE-MN-BT-GDNA-250	Expiration Date:	10/20/2024

Quality Control

Spectrophotometric Analysis

- Acceptable Range for $A_{260}/A_{280}=1.8\pm0.15$.
- Comparison of the Test Sample to a previously tested Standard. Acceptable range for Test Sample is $\leq \pm 10\%$ of Standard, based upon spectrophotometric analysis. The "Standard" is a previously tested and validated sample.

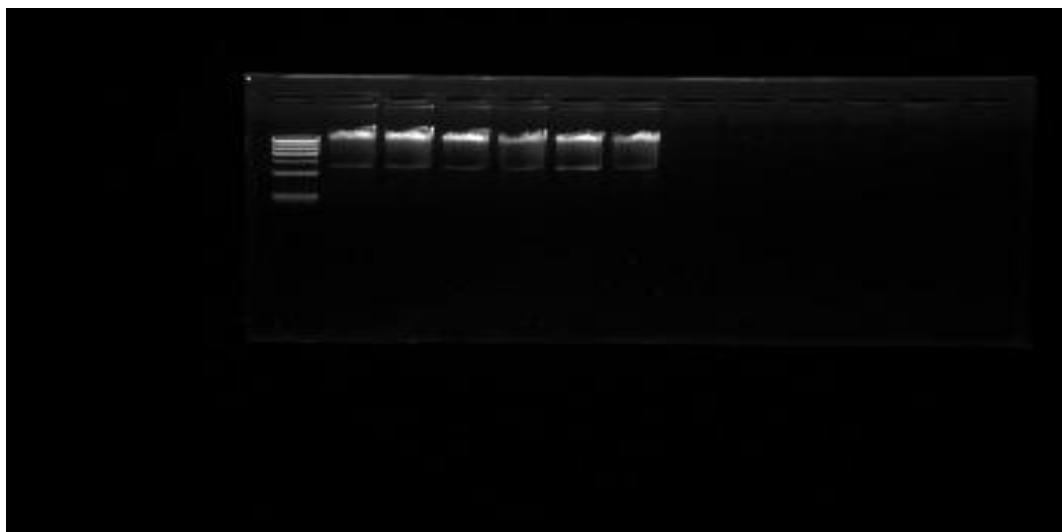
Electrophoretic Analysis

- Agarose gel electrophoresis of the samples exhibits a tight genomic DNA band without significant visible degradation.
- Agarose gel electrophoresis of the samples exhibits no contaminating RNA.

Gel Image and Test Data

Item	Test Date						Sample
	1	2	3	4	5	6	
A_{260}	1.075	1.025	1.100	0.890	0.995	1.152	1,2,3 are duplicate Test Samples 4,5,6 are duplicate Standards
A_{280}	0.565	0.545	0.585	0.472	0.528	0.610	
A_{260}/A_{280}	1.901	1.882	1.880	1.885	1.884	1.890	
Yield (μg)	40.308	38.446	41.265	33.360	37.313	43.208	
Electrophoresis	√	√	√	√	√	√	PASS
No visible RNA	√	√	√	√	√	√	
Endonuclease digest	√	√	√	√	√	√	
[Test Sample/Standard] Yield Difference	5.390%						PASS

Ladder TEST STANDARD



UElandy Inc. warrants and represents that all inspections and testing for the article described above have been performed at UElandy Inc. QC laboratory located on-site at the manufacturing plant. UElandy Inc. manufacturing facility is located at Room 302, Building 1, No.18& Chunyao Road, Xiangcheng District, Suzhou, Jiangsu Province P.R, 215143 China

(QC Inspector) *tian qin zheng*

(Approver) *Qin Hua-Yu*